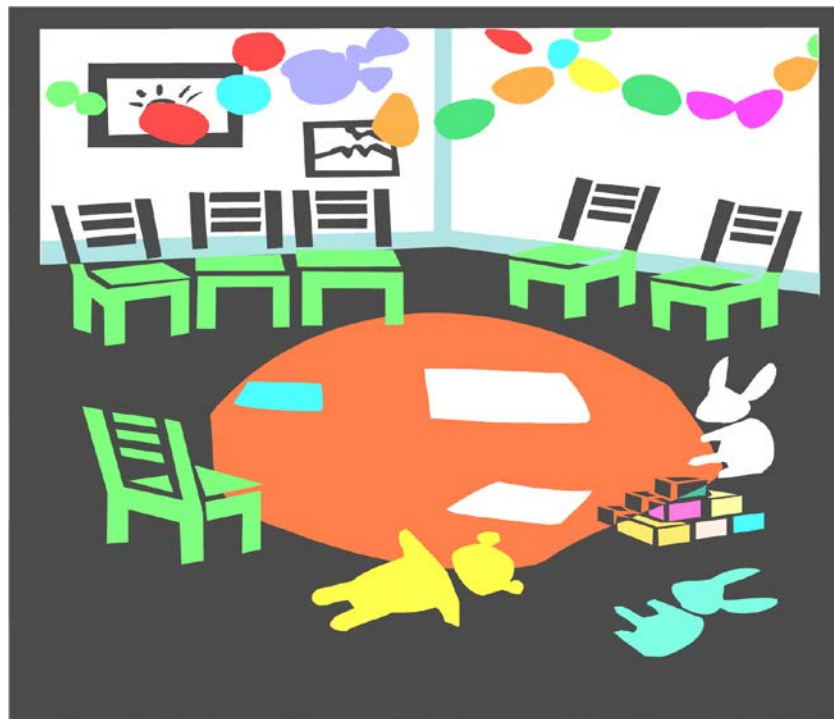




*EARLY CHILDHOOD PROGRAM
PARENT HANDBOOK
2017-2018 / 5778*



*Rabbi Shmuel Klammer,
Head of School*

*Mrs. Caroline Wilk
Pre School Director*

60 West End Ave.
718-338-4000 Ext: 210
Fax: 718-258-9626
www.shulamithofbrooklyn.org

Shulamith School of Brooklyn...

Inspiring B'not Yisrael to a Bright Future!

Our Mission

Shulamith School of Brooklyn inspires girls to a total commitment to Torah, *Mitzvot* and careful observance of *Halacha*. We cultivate a love for *Ivrit* and *Medinat Yisrael*. Excellence in General Studies is essential to our program. We foster deep commitment to *midot tovot* by providing outstanding role models.

שולמית

Joyful, happy environment -- שמחה -- ש

Loving Kindness -- וחסד -- ו

Judaic Studies & Excellence in General -- למוד -- ל

Exceptional, positive character -- מדות טובות -- מ

Hebrew & Israel -- ישראל -- י

mitzvot and study Torah -- תורה -- ת

SHULAMITH EARLY CHILDHOOD PROGRAM PARENT HANDBOOK

We are pleased to welcome you and your daughter to the Shulamith School Early Childhood Program. We appreciate the trust you have placed in us by enrolling your child in our school. We are proud of our well-trained and dedicated staff. We know that they will foster the close relationship between home, child and school that is essential for quality education.

The information in this booklet will help make the transition from home to school a smooth one.

Early Childhood Curriculum Objectives

In a relaxed and caring environment, our programs are planned to meet the needs of our *talmidot* in the following areas:

1. Religious Development

- √ Teaching Jewish values through the performance of *mitzvoth* and *excellent midot*.
- √ Providing experiences of Jewish holidays and customs practiced during the Jewish calendar year.
- √ Teaching *tefillot* and *brachot*.
- √ Presenting learning activities on *Parshat Ha'shavuah* and stories of Biblical personalities.
- √ Developing *Ivrit* vocabulary and a readiness for *Ivrit* language instruction.
- √ Teaching *Ivrit* through dialogues, games, songs and stories.
- √ Developing a love of Eretz Yisrael and identification with its people.





2. Academic Development

- √ Enhancing each child's natural interest in the world.
- √ Encouraging a love of learning.
- √ Developing skills in listening and speaking, and readiness for reading and writing.
- √ Encouraging language development through hands-on activities.
- √ Developing problem-solving and thinking skills in mathematics and science.

3. Social and Emotional Development

- √ Establishing a positive school experience.
- √ Encouraging confidence and self-esteem.
- √ Fostering positive relationships with teachers and other children.
- √ Encouraging participation in constructive play with another child or in a small group.
- √ Working in groups, encouraging cooperation and sharing.
- √ Creating a respectful environment in which all children are encouraged to express their feelings.

4. Physical Development

- √ Providing opportunities for development of skills in large motor activities such as climbing, running, jumping and building.
- √ Weekly physical education instruction.
- √ Providing opportunities for development of fine motor skills such as coloring, cutting, painting and manipulating toys and puzzles.

5. Aesthetic Development

- √ Developing the appreciation of music through singing, dancing, playing percussion instruments and listening to the sounds of music.
- √ Developing an appreciation of art through free creative experiences with various media.

6. Home-School Partnership

We believe that a close and harmonious relationship between home and school can help your child maximize the benefits of her school experience. Children's positive attitudes towards learning are enhanced by interested parents who are actively involved in our school and express a positive opinion about school staff and the program.

Please keep us informed of any changes that may be happening in your family life: illness, death in the family, birth of a sibling, family visits, etc. This information can be very helpful in understanding your child's behavior.

Teachers are always available to meet with parents who may have questions or concerns about their child's development and school experience. If you would like your child's teacher to contact you, please send a note with your child or phone the school at 718-338-4400 ext. 210 and leave a message indicating the best time to reach you.



All adults who visit Shulamith School are expected to dress in accordance with standards befitting a religious atmosphere. We

teach the children about *Tzniut* and as adults must set an example for them to follow. We ask that women not enter our building in slacks, short skirts, or immodest tops in adherence to our school's dress code. We appreciate your cooperation in ensuring consistency in the examples we set for our children and ourselves.

7. School Communication

- √ A vital component of the partnership between home and school is communication. We make every effort to make sure that parents are kept up-to-date with school activities. Newsletters from morot and our weekly email newsletter (ShulamithofBrooklyn.org) will keep you abreast of Shulamith School highlights.
- √ We ask that parents assist their child in going through the contents of their school bag each day. In addition to watching for notes and newsletters, it is a good opportunity to have your child share with you her school projects and activities.

√ 8. School Hours

Supervised early arrival begins at 8:10 AM.

Nursery, Kindergarten, and Pre-1A hours:

Mon-Thurs - 8:30 A.M. – 4:00 P.M.

Friday – 8:30 a.m. – 1:00 PM.



- √ Please check our school calendar, available on our website – shulamithofbrooklyn.org, for vacation days and *Yomim Tovim*.

9. Preschool Arrival and Dismissal

- √ Parents driving to school should use extreme caution when children are present. All children should be carefully escorted by a parent between their cars and the entrance to the school building.
- √ You must notify your child's teacher in writing of any change in your child's pickup arrangements. Please send a note with your child on the day of the change giving your permission for an alternate person to pick up your child from school.

10. Health Procedures and Regulations

- √ State law mandates that no student be allowed entry to school without proof of immunization. Medical forms and Emergency information forms must be submitted before school starts. Children without these essential forms will be denied admission to class.
- √ If your children becomes ill during the school day, you will be promptly notified and expected to pick up your child immediately, until you arrive, we will keep her as comfortable as possible.
- √ The office must be notified if your child contracts any contagious disease, including: chicken pox, head lice, measles, conjunctivitis, mumps, pinworms, strep throat. We will notify the families of children who may have been exposed to a contagious disease so that they can watch for symptoms.
- √ A child may return to school after she is free of fever and other symptoms for at least 24 hours.
- √ When possible, please have your doctor prescribe **medications** that require administration only once or twice a day, so that it can be taken at home. If your child must take



medication during the school day, the following procedures will be strictly adhered to:

- All medications must be sent to school in their original container.
- Parents must give their written permission for their child to receive medication.
- All medications will be kept in the Health Office.

√ In order to maintain a safe and healthy environment for all of our students, we are a **nut free preschool**. Please carefully check the ingredient labels of the products you send to school and make sure they are free from all nuts and seeds and traces of nut products or nut processing.

√ Although head lice are not a disease, it is a highly contagious condition which requires the cooperation of all parents. All socio-economic levels are affected by lice and it is especially common among young children. Lice are not associated with personal hygiene. Please check your child's scalp periodically. If your child is infected with lice you must notify the school. After being treated for lice, your child will be checked for nits (lice eggs) before she can be readmitted to class.

There will be a mandatory school-wide nit screening within the first week of the school year. Following winter vacation and Pesach break, children will be checked again.

11. Clothing

√ Please have your child wear comfortable, washable clothing that she can easily manage independently.



Please be aware that crocs and slippers are not allowed for safety reasons.

- ✓ Each day your child should bring to school a large backpack with a wide opening. Mark the bag clearly with your child's name.
- ✓ All children need a waterproof smock for painting.
- ✓ Each child must have a change of clothing to be kept at school. Please label each item of clothing with your child's name and place it in a shoebox. Write your child's name on the shoebox and bring it with you on the first day of school.
- ✓ Children should come to school ready to play outside every day, with appropriate outdoor clothing. During the winter please remember to send your child with boots, a hat, mittens or gloves, and shoes to change out of boots.
- ✓ On *Yom Ha'Atzmaut* and *Yom Yerushalayim* the entire school is required to wear blue and white to foster our identification with Israel.



12. Kashrut

- ✓ All food which is brought into our school must be certified kosher. Any classroom treats for birthdays or special occasions must be in original unopened packages with the *kashrut* certification clearly visible. No home baked or prepared foods are permitted.
- ✓ The following are acceptable kosher endorsements: Chof K, OK, OU, Rabbanut of Eretz Yisrael.

13. Parties

√ Birthdays are special occasions in our classrooms. Please discuss with your child's *morah* when you would like to have your child's class celebrate her birthday. Birthday cakes or cupcakes must be brought in the original bakery box with *hechsher*. Please remember that we serve meat lunches on Tuesdays.



√ We also welcome a gift to your child's classroom in honor of her birthday, e.g. a book for the class library, a CD or a puzzle. Please ask your daughter's *morah* for suggestions.

√ In planning birthday parties and other activities outside school involving students in your child's class, we remind parents to be sensitive to all the children. If more than just a few close friends are invited to a party, then all of the children in the class must be invited. Invitations to children will be distributed in school only if these guidelines are followed.

√ Refreshments served at home parties must maintain the same standards of kashrut that are upheld in the school building.

14. Tzedakah

√ Children are encouraged to fulfill the *mitzvah* of *tzedakah* by bringing a penny, nickel or more for the *tzedakah* box each day. The giving of *tzedakah* is one of many ways that we encourage our children to perform *mitzvot*.



15. Field Trips

√ A permission form will be sent to you prior to each field trip notifying you of the details of the trip and the costs involved. Your signature is required in order for your child to participate. All checks may be made payable to Shulamith School. Please return your forms promptly.



16. Counseling Services

√ Short-term counseling services are available for students with academic or personal needs. Our professional staff provides individual and group counseling. The counseling program is based on the principles of care, respect, responsibility, and confidentiality. Within this framework, our highly qualified counselor works together with teachers, parents and the administration in a cooperative effort to enable each student to derive full advantage from our unique program. If you have concerns about your child that you feel may require professional intervention, please contact Rabbi Klammer. All contacts with our professional staff are handled with the utmost confidentiality.

17. School Closings- due to inclement weather will be publicized as follows:

1. Please check our website, www.shulamithofbrooklyn.org
2. E-mail- An e-mail will be sent to all parents (please be certain that you have signed up to receive Shulamith e-mails)

3. A phone call will be made by 7:00 A.M. to all families of Shulamith School. Please make sure we have up-to-date phone numbers.
4. Please note that when the public school district cancels school Shulamith will be closed.

18. Shulamith Parents Organization

The Shulamith Grandparent-Parent-Student Organization (GPS) is an important link in our school community by raising funds and organizing programs for parents, teachers and students. The GPS is both an avenue for home-school communication as well as an opportunity for parents to make a difference in the school. Parents are encouraged to become active members. You will be receiving more information about the GPS and its activities during the school year.

Wishing your daughter a wonderful year filled with positive excitement, *mitzvot*, *midot tovot* and wonderful learning.



שנה טובה ומתוקה!

